

Ward Parkway Plaza Restaurant

85th Street at State Line Road & Ward Parkway, Kansas City, MO



Lease Rate: \$25/SF NNN | 1,505 SF Restaurant Space

DEMOGRAPHICS

	1 mile	3 miles	5 miles
Estimated Population	9,459	95,459	239,803
Avg. Household Income	\$149,310	\$146,226	\$131,422

- Directly Across from newly redeveloped Ward Parkway Mall
- Just one block north of Ward Parkway Center which includes Target, Trader Joe's, Genesis Fitness, AMC Theaters, TJ Maxx, HomeGoods, and many more
- Intersection carries over 60,000 cars per day



CLICK HERE TO VIEW MORE LISTING INFORMATION

For More Information Contact:

PHIL PECK, CCIM | 816.412.7364 | ppeck@blockandco.com

DAVID BLOCK | 816.412.7400 | dblock@blockandco.com

Exclusive Agents



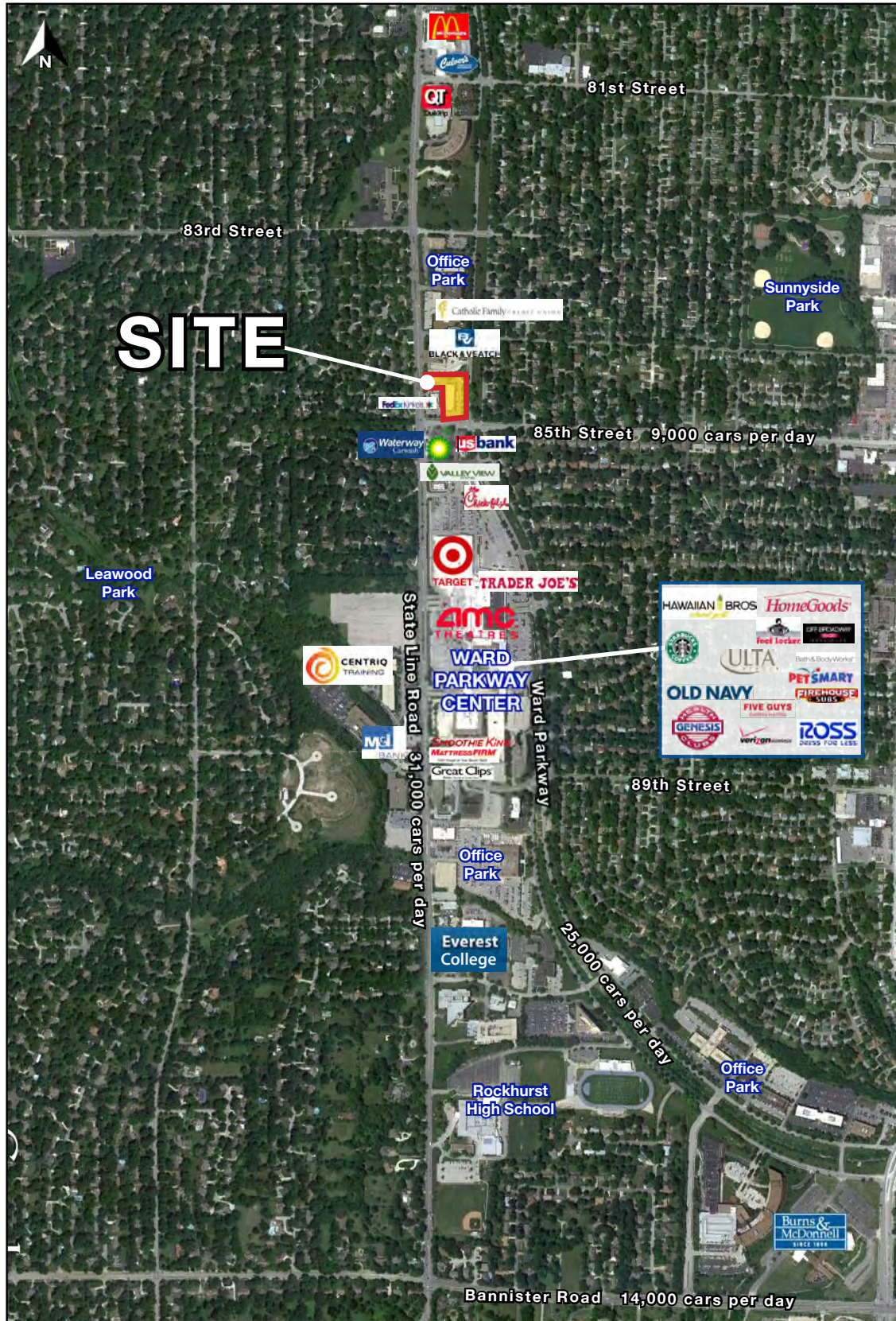
Ward Parkway Plaza Restaurant

85th Street at State Line Road & Ward Parkway, Kansas City, MO

PROPERTY PHOTOS



AERIAL

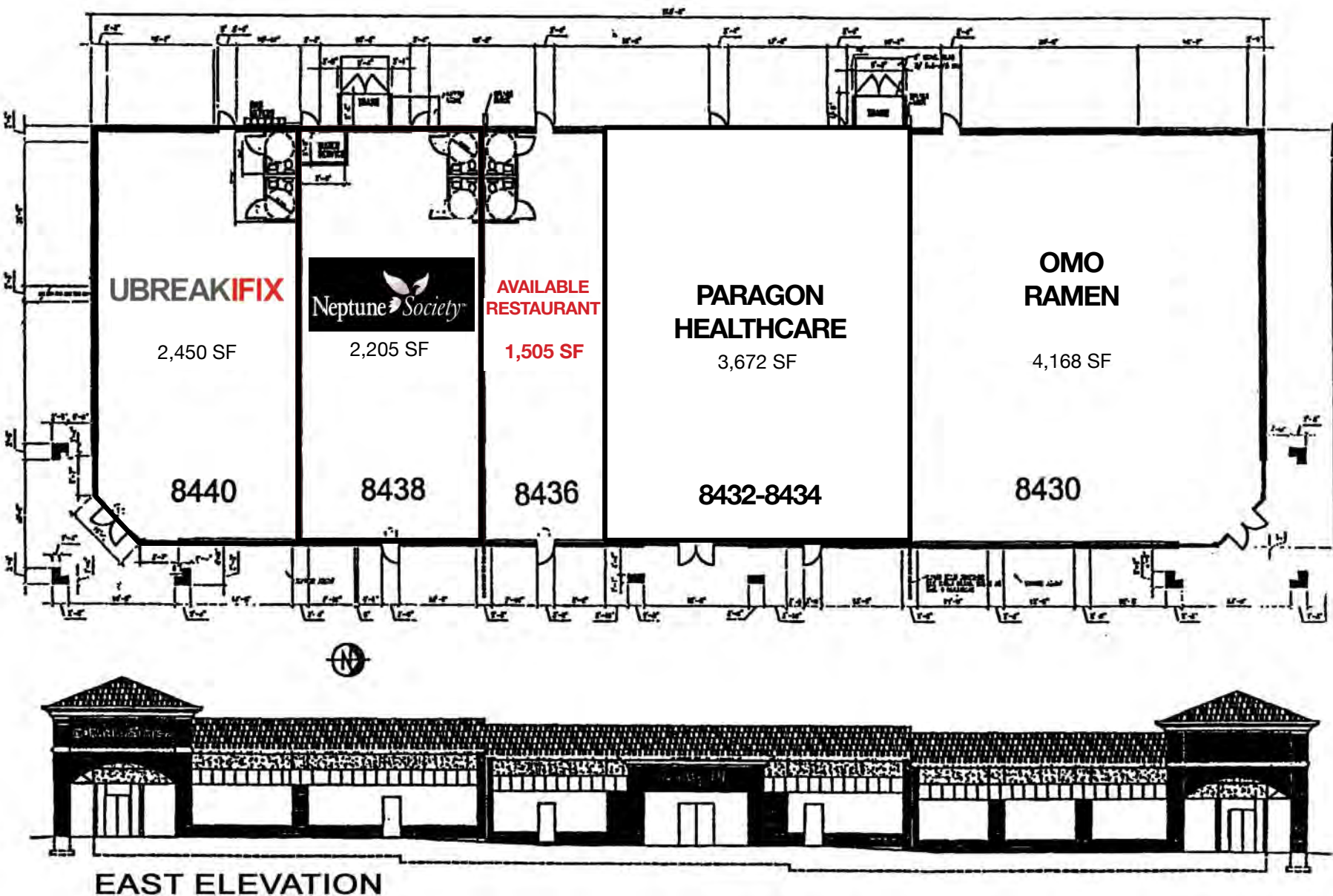




Ward Parkway Plaza Restaurant

85th Street at State Line Road & Ward Parkway, Kansas City, MO

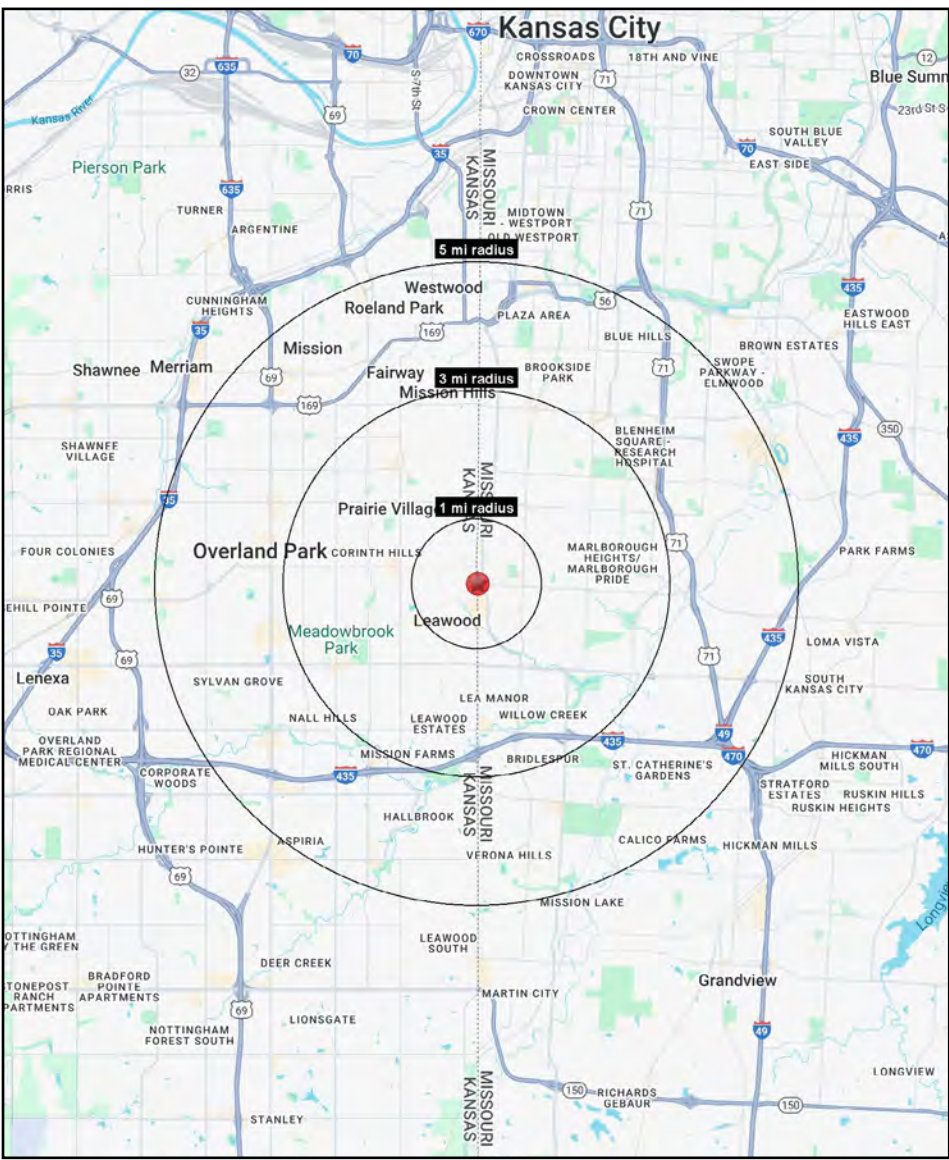
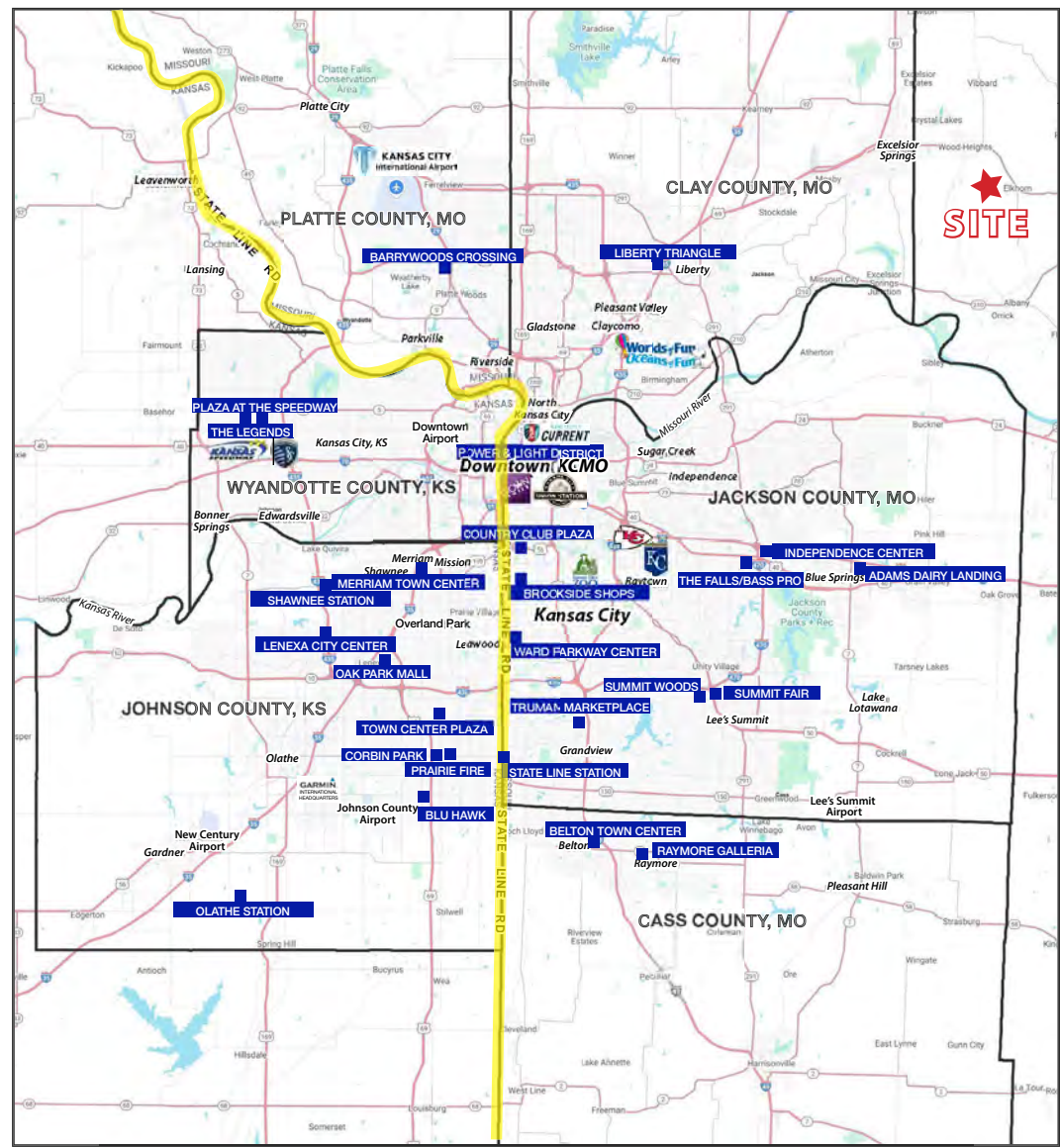
AERIAL





Ward Parkway Plaza Restaurant

85th Street at State Line Road & Ward Parkway, Kansas City, MO





Ward Parkway Plaza Restaurant

85th Street at State Line Road & Ward Parkway, Kansas City, MO

85th Street & State Line Road Kansas City, MO 64114	1 mi radius	3 mi radius	5 mi radius
Population			
2025 Estimated Population	9,459	95,459	239,803
2030 Projected Population	9,205	94,723	237,384
2020 Census Population	9,280	94,118	236,380
2010 Census Population	9,253	90,543	227,261
Projected Annual Growth 2025 to 2030	-0.5%	-0.2%	-0.2%
Historical Annual Growth 2010 to 2025	0.1%	0.4%	0.4%
2025 Median Age	39.4	40.0	38.9
Households			
2025 Estimated Households	4,328	43,254	109,837
2030 Projected Households	4,262	43,484	110,260
2020 Census Households	4,423	42,566	106,947
2010 Census Households	4,351	40,912	101,947
Projected Annual Growth 2025 to 2030	-0.3%	0.1%	-
Historical Annual Growth 2010 to 2025	-	0.4%	0.5%
Race and Ethnicity			
2025 Estimated White	86.5%	76.9%	72.4%
2025 Estimated Black or African American	4.5%	14.6%	16.8%
2025 Estimated Asian or Pacific Islander	2.0%	1.9%	2.6%
2025 Estimated American Indian or Native Alaskan	0.2%	0.3%	0.3%
2025 Estimated Other Races	6.8%	6.3%	7.8%
2025 Estimated Hispanic	6.3%	6.1%	7.8%
Income			
2025 Estimated Average Household Income	\$149,310	\$146,226	\$131,422
2025 Estimated Median Household Income	\$122,403	\$109,505	\$99,523
2025 Estimated Per Capita Income	\$68,364	\$66,342	\$60,338
Education (Age 25+)			
2025 Estimated Elementary (Grade Level 0 to 8)	0.7%	1.3%	1.6%
2025 Estimated Some High School (Grade Level 9 to 11)	1.1%	2.2%	2.7%
2025 Estimated High School Graduate	13.6%	13.1%	15.1%
2025 Estimated Some College	16.0%	16.5%	18.4%
2025 Estimated Associates Degree Only	6.3%	5.2%	5.8%
2025 Estimated Bachelors Degree Only	37.7%	35.6%	33.4%
2025 Estimated Graduate Degree	24.7%	26.1%	22.9%
Business			
2025 Estimated Total Businesses	784	4,400	13,191
2025 Estimated Total Employees	6,789	39,697	164,789
2025 Estimated Employee Population per Business	8.7	9.0	12.5
2025 Estimated Residential Population per Business	12.1	21.7	18.2

©2025, Sites USA, Chandler, Arizona, 480-491-1112 Demographic Source: Applied Geographic Solutions 5/2025, TIGER Geography - RS1